

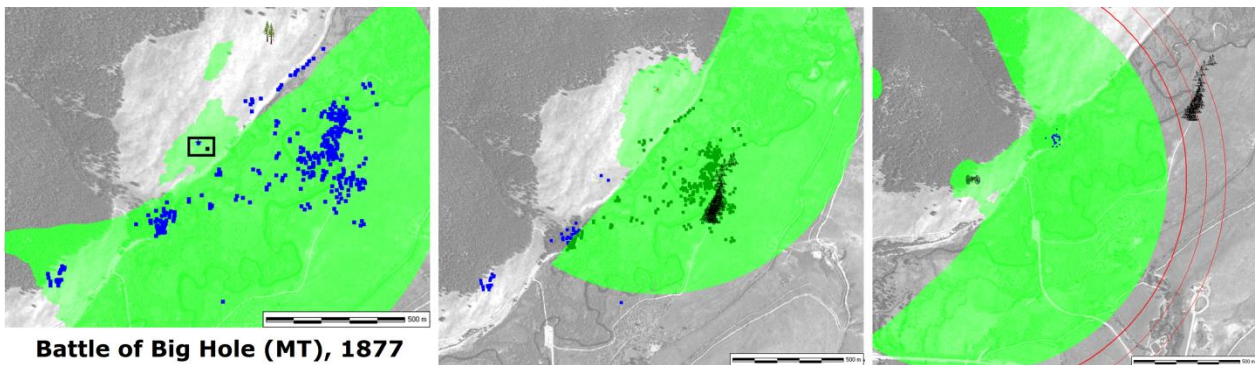
The SD Mines GEOL/GEOE/PALEO Seminar Series

presents

Military Geology

Professor Peter Guth, Oceanography Department, USNA

Geology has always influenced military operations, but the actual use of geology developed only slowly as geology became a science in the 19th century. The major contributions to military geology have been in engineering, water supply, and general terrain analysis. Different countries have had different philosophies about employing geologists in uniform. The recent democratization of computer mapping and remote sensing has placed visualization and interpretation of the terrain into the hands of soldiers and civilians alike on cell phones.



Battle of Big Hole (MT), 1877

Professor Peter Guth has been a professor at the Naval Academy for over 32 years. He began his geology studies at Deep Springs College, where he found the only known specimen of a Lower Cambrian echinoderm *Helicoplacus guthi*. He graduated from West Point, and served with Engineer construction units in Korea and Kansas. For his PhD from MIT, he mapped Cenozoic extensional faulting in the Sheep Range north of Las Vegas. He created MICRODEM, a freeware GIS program with emphasis on geology and undergraduate instruction. Professor Guth was awarded the DeFleury Medal from the US Army Engineer Regiment in 2000 for work in army terrain analysis. He received the Lifetime Achievement Award from the International Society for Geomorphometry in 2015, and the Faculty Service Award from the Naval Academy in 2020. His web site is at <https://www.usna.edu/Users/oceano/pguth/website/plghome.htm>

4:00 pm MDT, Friday, September 11, 2020
Classroom Building, Room CB 204W

<http://www.sdsmt.edu/GGEseminar>