

WHY: Have you ever wondered how cameras capture images? What are the different parts inside the camera for? How are cameras like our own eyes? How are they different?

Materials:

- Time laps video

Instructions:

1. Play the video
2. Observe the changes of the food in the video

Diagram 1

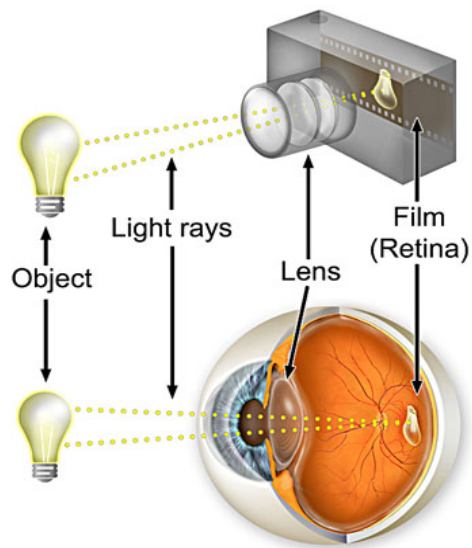
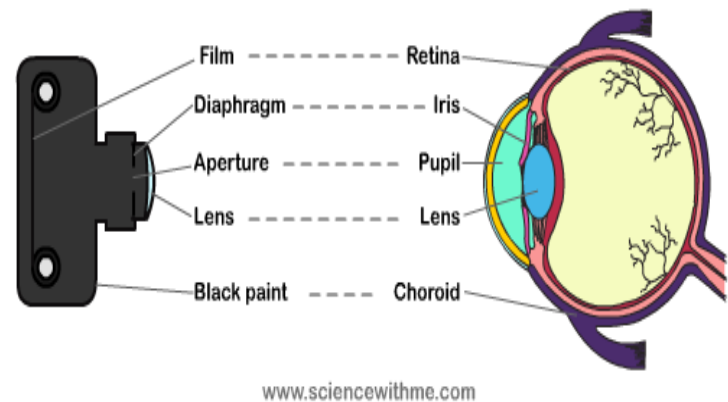


Diagram 2



What you see:

This video was made using pictures taken for 13 days. The camera was set up to take a picture every 40 minutes, which resulted in 457 pictures. These pictures were then placed in chronological order to make a time lapse video of 48 seconds.

As shown in Diagram 1 and 2, the human eye is very similar to a camera. The lens works as a focusing device for the camera. The light from the object hits the lens and bends the light for it to be captured.